



Città di Seregno



Guide to separate waste collection

Tips for a cleaner city
and a better environment



Quando ci prendiamo cura dell'ambiente
la vita è più azzurra

a2a
LIFE COMPANY

Gelsia Ambiente Eco Desk at Via Umberto I 78

Opening hours



Mon	Tue	Wed	Thu	Fri	Sat
9.00 - 12.30	9.00 - 12.30	9.00 - 12.30	9.00 - 12.30 15.30 - 18.30	9.00 - 12.30	closed



What we do

- registration, modification and termination of the waste tax;
- information regarding the tax;
- information on separate waste collection;
- information on the collection of grass clippings (by subscription) and bulky waste from the home;
- issuance of the G-Card for new non-domestic users (for bag dispensers);
- delivery of bags and bins for new users;
- requests and reports.

TARI

What is it and why do you pay it?

TARI is the tax that funds municipal waste management services, including **collection, road sweeping, cleaning of public areas, bin emptying** and **operation of the ecological platform**.

Payment of the TARI entitles you to the provision of bags and containers, the home collection service and access to the Ecological Platform. **A 10% discount is available for payments made by direct debit** (form available at the Ecosportello office or on the gelsiambiente.it website).

Registration and **payment** are **mandatory** for anyone occupying or owning a property; failure to pay results in penalties.



Mechanised street sweeping



To ensure effective cleaning, it is necessary **to observe the sweeping days and times** indicated on the signs.

During these operations, it is prohibited to park in the affected areas.

Failure to comply with this prohibition will result in the imposition of the **applicable penalties**.

Parking correctly during permitted hours is essential to keep the city clean.

Correct use of road bins

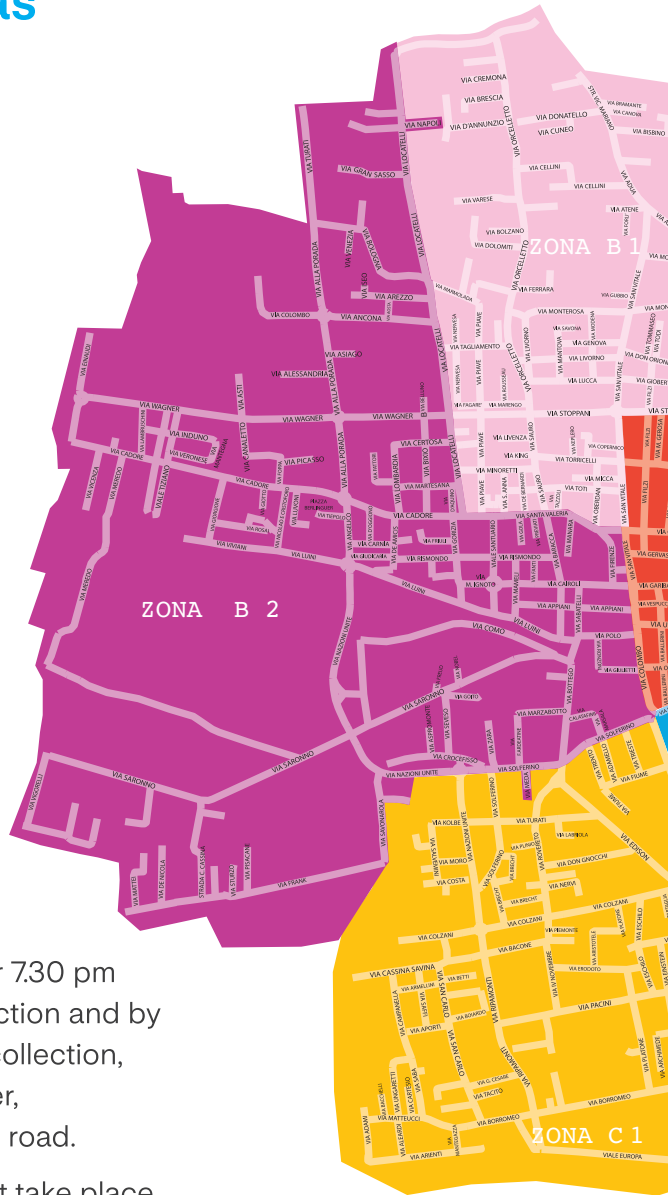


Road bins are intended exclusively for **small waste generated while out and about**, such as till receipts, tissues, cigarette butts and dog droppings.

It is **prohibited to use them to dispose of household waste**; household waste must be disposed of via the domestic collection service, the dedicated containers available locally, or the ecological platform.

Improper use of bins is **punishable by a fine!**

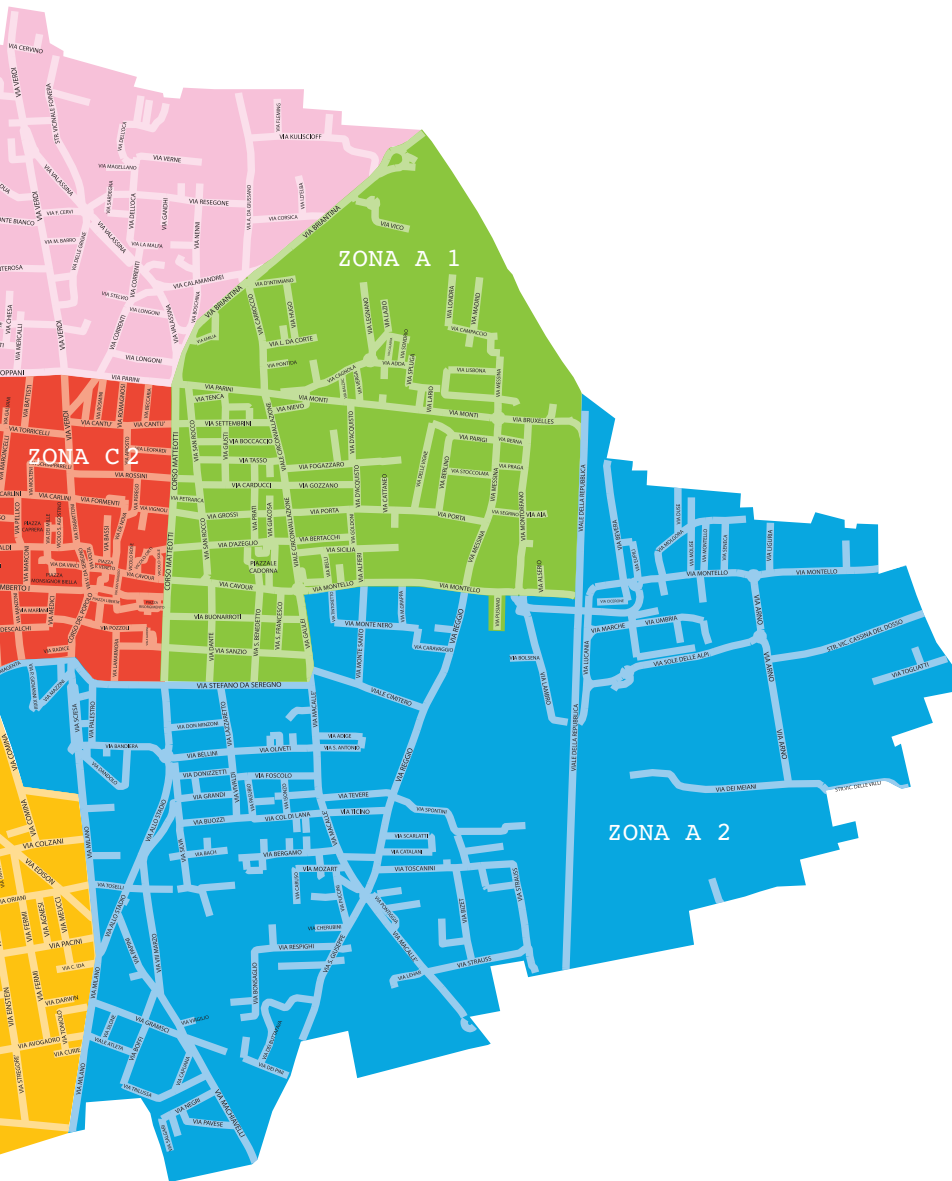
Collection areas



Remember:

- Put out your waste after 7.30 pm on the day before collection and by 6.00 am on the day of collection, near your house number, at the side of the public road.
- Waste collection will not take place on the following days:
 - 1 January • 1 May • 15 August • 25 December

Check the service collection schedule on gelsiambiente.it or on the G-App.



ZONA A 1

ZONA C 2

ZONA A 2

Collection calendar

	Monday	Thursday
A1		
	Monday	Thursday
A2		
	Tuesday	Friday
B1		
	Tuesday	Friday
B2		
	Wednesday	Saturday
C1		
	Wednesday	Saturday
C2		

A

ABRUZZO (A2)
ADAMELLO (C1)
ADAMI (C1)
ADDA (A1)
ADIGE (A2)
ADUA (B1)
AGNESI (C1)
ALEARDI (C1)
ALESSANDRIA (B2)
ALFIERI (A1)
ALIGHIERI (A1)
ALLA CHIESA (C2)
ALLENDE (B1)
ALPINI (A2)
ALSERIO (A1)
ANCONA (B2)
ANDERSEN (A2)
ANGELICO (B2)
ANKARA (A1)
AOSTA (B2)
APORTI (C1)
APPIANI (B2)
ARCHIMEDE (C1)
AREZZO (B2)
ARIENTI (C1)
ARIOSTO (C2)
ARISTOTELE (C1)
ARPELLINI (C1)
ARNO (A2)
ASIAGO (B2)
ASPROMONTE (B2)
ASTI (B2)
ATENE (B1)
ATLETA (A2)
AVOGADRO (C1)

B

BACCHELLI (C1)
BACH (A2)
BACONE (C1)
BADEN POWELL (A1)
BALLERINI (C2)
BARACCA (B2)
BASSI (C2)
BATTISTI (C2)
BECCARIA (C2)
BEETHOVEN (A2)
BELLI (A1)
BELLINI (A2)
BELLUNO (B2)
BENEVENTO (B2)
BERGAMO (A2)
BERLINGUER (B2)
BERLIN (A1)
BERNA (A1)
BERNINA (A1)
BERTACCHI (A1)
BETTI (C1)
BEVERA (A2)
BIANCHI (A2)
BIELLA (C2)

BIRAGO (A2)
BISBINO (B1)
BIXIO (B2)
BIZET (A2)
BOCCACCIO (A1)
BOIARDO (C1)
BOITO (A2)
BOLOGNA (B2)
BOLSENA (A2)
BOLZANO (B1)
BORROMEO (C1)
BOSCHI DI SAN
PIETRO (B2)
BOSCHINA (B1)
BOTTEGO (B2)
BRAHMS (A2)
BRAMANTE (B1)
BRECHT (C1)
BRESCIA (B1)
BRIANTINA (A1)
BRUGHIERE DI SAN
PIETRO (B2)
BRUNELLESCHI (C1)
BRUXELLES (A1)
BUONARROTI (A1)
BUOZZI (A2)
BUTTAFAVA (A2)

C

CABIATI (A2)
CADORE (B2)
CADORNA (A1)
CAGNOLA (A1)
CALABRIA (A1)
CALAMANDREI (B1)
CALATAFIMI (B2)
CAMPACCIO (A1)
CAMPANELLA (C1)
CAMPANIA (A2)
CANALETTO (B2)
CANOVA (B1)
CANTU' (C2)
CAPRERA (C2)
CAPUANA (A2)
CARAVAGGIO (A2)
CARDUCCI (A1)
CARLINI (C2)
CARNIA (B2)
CARRÀ (B2)
CARROCCIO (A1)
CARTESIO (C1)
CARUSO (A2)
CASATI (B2)
CASCINA DOSSO (A2)
CASCINA IDA (C1)
CASSINA BONSAGLIO
(A2)
CASSINA COLLI
(B1)
CASSINA DEL DOSSO
(A2)
CASSINA MERÈ (B2)
CASSINA SAVINA (B2)

CASSINA SAVINA (C1)
CATALANI (A2)
CATTANEO (A1)
CAVOUR (from Corso
Matteotti to Via Galilei)
(A1)
CAVOUR (from Piazza
Vittorio Veneto to Corso
Matteotti) (C2)
CELLINI (B1)
CERE' (B2)
CERTOSA (B2)
CERVINO (B1)
CHERUBINI (A2)
CHIESA D. (B1)
CICERO (A2)
CILEA (A2)
CIMABUE (B2)
CIMAROSA (A2)
CIMITERO (A2)
CIRCONVALLAZIONE
(A1)
COL DI LANA (A2)
COLLODI (A2)
COLOMBO C. (C2)
COLOMBO G. (B2)
COLZANI (C1)
COMINA (C1)
COMO (B2)
CONCORDIA (C2)
COPENHAGEN (A1)
COPERNICO (B1)
CORREGGIO (B2)
CORRENTI (from Via
Parini to Via Valassina)
(B1)
CORRENTI (from Via
Parini to Via Verdi)
(C2)
CORRIDONI (A2)
CORSICA (B1)
COSTA (C1)
CREMONA (B1)
CROCE (B2)
CROCEFISSO (B2)
CUNEO (B1)
CUOCO (C1)
CURIE (C1)
CUSANINA (A1)

D

D'ACQUISTO (A1)
D'ANNUNZIO (B1)
D'AZEGLIO (A1)
D'INTIMIANO (A1)
D'OGGIONO (B2)
DA GIUSSANO A. (B1)
DA SEREGNO (B2)
DARWIN (C1)
DE AMICIS (B2)
DE BALZAC (A1)
DE BERNARDI (B1)
DE GASPERI (C2)

DE MARCHI (B1)
DE NICOLA (B2)
DE NOVA (C2)
DE SANCTIS (A2)
DEI MILLE (C2)
DELEDDA (A2)
DI VITTORIO (C1)
DIAZ (A1)
DOLOMITI (B1)
DON GNOCCHI (C1)
DON LONGONI (B1)
DON MINZONI (A2)
DON ORIONE (B1)
DON STURZO (B2)
DONATELLO (B1)
DONATORI DEL
SANGUE (C2)
DONIZETTI (A2)
DOSSO (A2)
DUBLIN (A1)
DUSE (A2)

E

EDISON (C1)
EINAUDI (B2)
EINSTEIN (C1)
EMILIA (A1)
ERODOTO (C1)
ESCHILO (C1)
EUPILI (A2)
EUROPA (C1)

F

F.LLI BANDIERA (A2)
F.LLI CAIROLI (B2)
F.LLI CERVI (B1)
F.LLI DANDOLO (A2)
F.LLI SABATELLI (B2)
FAGARÈ (B1)
FALLACI (B1)
FANTI (B2)
FARI (C1)
FATTORI (B2)
FERMI (C1)
FERRARA (B1)
FILZI (north of Via
Stoppani) (B1)
FILZI (south of Via
Stoppani) (C2)
FIORI (C2)
FIRENZE (B2)
FIUME (C1)
FLEMING (B1)
FOGAZZARO (A1)
FOINERA (B1)
FOPPA (B2)
FORLÌ (B1)
FORMENTI (C2)
FOSCOLO (A2)
FOSSE ARDEATINE
(B2)
FRANK (B2)
FREUD (B2)

FRIULI (B2)

G

GADDA (A2)
GALILEI (A1)
GALVANI (C2)
GANDHI (B1)
GANDINI (B2)
GARCIA LORCA (A2)
GARIBALDI (C2)
GENOVA (B1)
GEROSA (C2)
GIACOSA (A1)
GIARDINI (C2)
GIOBERTI (B1)
GIORDANO (A2)
GIORGIONE (B2)
GIOTTO (B2)
GIUDICARIA (B2)
GIULIETTI CAPITANO (B2)
GIULIO CESARE (C1)
GIUSTI (A1)
GOBETTI (C1)
GOITO (B2)
GOLA (B2)
GOLDONI (A1)
GORIZIA (B2)
GOZZANO (A1)
GRAMATICA (A2)
GRAMSCI (A2)
GRAN SASSO (B2)
GRANDI (A2)
GRIGNE (B1)
GROSSI (A1)
GUBBIO (B1)
GUICCIARDIN (A1)

H

HUGO (A1)

I

INDIPENDENZA (B2)
INDUNO (B2)
IPPOCRATE (C1)
ISEO (B2)
ISOLA D'ELBA (B1)
ISONZO (A2)
ITALIA (C2)
IV NOVEMBRE (C1)

J

JACOPONE DA TODI (B1)
JEFFERSON (B1)

K

KENNEDY (C2)
KEPLERO (B1)
KING (B1)
KOLBE (C1)
KULISCIOFF (B1)

L

L'AIA (A1)
LA MALFA (B1)
LA PIRA (B1)
LABRIOLA (C1)
LAMARMORA (C2)
LAMBRO (A2)
LAMBRUSCHINI (B2)
LANZONE DA CORTE (A1)
LARIO (A1)
LAZIO (A1)
LAZZARETTO (A2)
LEGNANO (A1)
LEHAR (A2)
LEONARDO DA VINCI (C2)
LEONCAVALLO (A2)
LEOPARDI (C2)
LIBERAZIONE (A2)
LIBERTÀ (C2)
LIGURIA (A2)
LINATE 8 OTTOBRE 2001 (A2)
LISBON (A1)
LIVENZA (B1)
LIVORNO (B1)
LOCATELLI (B2)
LOMBARDI (C1)
LOMBARDIA (B2)
LONDRA (A1)
LONGONI P. (B1)
LUCANIA (A2)
LUCCA (B1)
LUINI (B2)
LUSSU (B1)
LUVONI (B2)

M

MACALLÈ (A2)
MACHIAVELLI (A2)
MADONNINA (B2)
MADRID (A1)
MAGELLANO (B1)
MAGENTA (A2)
MALOJA (A1)
MAMELI (B2)
MANARA (B2)
MANTEGAZZA (C1)
MANTEGNA (B2)
MANTOVA (B1)
MANZONI (C2)
MARCHE, (A2)
MARCONI (C2)
MARENCO (B1)
MARIANI (C2)
MARIANO (B1)
MARMOLADA (B1)
MARONCELLI (C2)
MARSALA (B2)
MARTESANA (B2)
MARX (C1)
MARZABOTTO (B2)
MASCAGNI (A2)

MATTEI (B2)

MATTEOTTI (A1)
MATTEUCCI (C1)
MAZZINI (A2)
MEDA (B2)
MEDICI DA SEREGNO (C2)
MEIANI DI LEVANTE (A2)
MERCALLI (B1)
MEREDO (B2)
MESSINA (A1)
MEUCCI (C1)
MICCA (B1)
MILANO (A2)
MILANO (from Via Milano to Via Comina) (C1)
MILITE IGNOTO (B2)
MINORETTI (B1)
MODENA (B1)
MODIGLIANI (C1)
MOLGORA (A2)
MOLISE (A2)
MOLTENI A. (A2)
MOLTENI G. (C2)
MONACO DI BAVIERA (A1)
MONTE BARRO (B1)
MONT BLANC (B1)
MONTE GRAPPA (A2)
MONTE NERO (A2)
MONTE ROSA (B1)
MONTE SANTO (A2)
MONTELLO (from Viale della Repubblica to the border) (A2)
MONTELLO (from Viale della Repubblica to Via Galilei) (A1)
MONTESSORI (A2)
MONTEVECCHIA (B1)
MONTEVERDI (A2)
MONTI (A1)
MONTORFANO (A1)
MORO (C1)
MOZART (A2)
MURATORI (C2)

N

NAPOLI (B2)
NAZIONI (B2)
NAZIONI UNITE (from Via Solferino to Via Colzani) (C1)
NEGRI (A2)
NENNI (B1)
NERVESIA (B1)
NERVI (C1)
NICOLAO E CRISTOFORO (B2)
NIEVO (A1)
NOBEL (B2)

O

OVERDAN (B1)
OCA (B1)
ODESCALCHI (C2)
OLIMPICO (A2)
OLIVETI (A2)
OMERO (C1)
ORCELLETTO (B1)
ORIANI (C1)
ORTI (C2)
OSLO (A1)

P

PACINI (C1)
PACINOTTI (B1)
PAGANELLA (B2)
PAGANINI (A2)
PALANZONE (B1)
PALESTRINA (A2)
PALESTRO (A2)
PAPA GIOVANNI XXIII (A2)
PAPINI (A2)
PARADISO (C2)
PARIGI (A1)
PARINI (from Corso Matteotti to Via Circonvallazione) (A1)
PARINI (from Via Verdi to Corso Matteotti) (B1)
PASCOLI (C2)
PASTEUR (B1)
PASUBIO (A2)
PAVESE (A2)
PELLICO (C2)
PEREGO (C2)
PERTICATO (B2)
PERTINI (B1)
PETRARCA (A1)
PIAVE (B1)
PICASSO (B2)
PIEMONTE (C1)
PIERMARINI (B2)
PINI (A2)
PIRANDELLO (C1)
PISACANE (B2)
PITAGORA (B1)
PLATONE (C1)
PLINIO (C1)
PLUTARCO (C1)
PO (A2)
POLO (B2)
PONCHIELLI (A2)
PONTIDA (A1)
PONTIGGIA (A2)
POPOLO (C2)
PORADA (B2)
PORTA (A1)
POZZO (C2)
POZZOLI (C2)
POZZONE (A2)

PRAGA (A1)
PRATI (A1)
PREALPI (A1)
PREVIATI (B2)
PUCCINI (A2)
PURADELLA (B1)
PUSIANO (A1)
Q
QUARTO (C2)
R
RADICE (C2)
RATTI (A1)
RAVEL (A2)
RAVENNA (B1)
REGGIO (A2)
REPUBBLICA (A2)
RESEGONE (B1)
RESPIGHI (A2)
RIPAMONTI (C1)
RISMONDO (B2)
RISORGIMENTO (C2)
ROMA (A2)
ROMAGNA (A1)
ROMAGNOSI (C2)
RONZONI (B2)
ROSAI (B2)
ROSE (C2)
ROSMINI (C2)
ROSSELLI (C1)
ROSSINI (from Corso Matteotti to Via San Rocco) (A1)
ROSSINI (from Corso Matteotti to Via Verdi) (C2)
ROUSSEAU (B1)
ROVERETO (C1)
S
SABA (C1)
SACCO E VANZETTI (B2)
SAFFI (C1)
SALGARI (A2)
SALVEMINI (C1)
SAN BENEDETTO (A1)
SAN CARLO (C1)
SAN FRANCESCO (A1)
SAN GERVASIO (C2)
SAN GIOVANNI BOSCO (C2)
SAN GIUSEPPE (A2)
SAN MARTINO (A2)
SAN PIETRO (C2)
SAN PROTASO (C2)
SAN ROCCO (A1)
SAN SALVATORE (A2)
SAN T. D'AQUINO (B2)
SAN VITALE (from Via Adua to Via Carlini) (B1)
SAN VITALE (from Via Carlini to Via Colombo)

(C2)
SAN VITTORE (C2)
SANT'AGOSTINO (C2)
SANT'AMBROGIO (C2)
SANT'ANNA (B1)
SANT'ANTONIO (A2)
SANTA VALERIA (B2)
SANTORRE DI SANTAROSA (B2)
SANTUARIO (B2)
SANZIO (A1)
SARDINIA (B1)
SARONNO (B2)
SAURO (B1)
SAVONA (B1)
SAVONAROLA (B2)
SCARLATTI (A2)
SCHIAPPARELLI (C2)
SCIESA (A2)
SEGANTINI (B2)
SEGNI (C2)
SEGRINO (A1)
SENECA (A2)
SETTEMBRINI (A1)
SEVESO (B2)
SICILIA (A1)
SIGNORELLI (B2)
SILA (B2)
SILONE (A2)
SILVA (A2)
SMETANA (B2)
SOLE (C2)
SOLE DELLE ALPI (A2)
SOLFERINO (from Via Nazioni Unite to Via Comina) (B2)
SOLFERINO (section parallel to Via Meda towards Via Brecht) (C1)
SONDRIO (A1)
SPLUGA (A1)
SPONTINI (A2)
STADIO (A2)
STEFANO DA SEREGNO (A2)
STELVIO (B1)
STOCCOLMA (A1)
STOPPANI (B1)
STRAUSS (A2)
STREGORE' (C1)
T
TACITO (C1)
TAGLIAMENTO (B1)
TALAMONI (A2)
TARTAGLIA (C1)
TASSO (A1)
TAZZOLI (B1)
TENCA (A1)
TEVERE (A2)
TICINO (A2)
TIEPOLO (B2)
TINTORETTO (A2)

TIZIANO (B2)
TOGLIATTI (A2)
TOMMASEO (B1)
TONALE (B1)
TONIOLO (C1)
TORINO (B2)
TORRICELLI (C2)
TORRICELLI (from Via Sauro to Via San Vitale) (B1)
TOSCANA (A1)
TOSCANINI (A2)
TOSELLI (A2)
TOTI (B1)
TRABATTONI UMBERTO I VERDI (from Via San Vitale to Via Verdi) (C2)
TRENTO (C1)
TRIESTE (C1)
TRILUSSA (A2)
TRINCEA DELLE FRASCHE (C1)
TURATI (C1)
U
UMBRIA (A2)
UNGARETTI (C1)
UNITE (from Via Luini to Via Solferino) (B2)
V
VALASSINA (B1)
VALLI (A2)
VANONI (B1)
VARESE (B1)
VELA (B2)
VENEZIA (B2)
VERDI (from the border Giussano to Via Stoppani) (B1)
VERGA (A1)
VERNE (B1)
VERONESE (B2)
VESPUCCI VIGNOLI (from Via Stoppani to Via Carlini) (C2)
VICENZA (B2)
VICO (A1)
VIGNE (A1)
VIGNOLI (from Corso Matteotti to Via San Rocco) (A1)
VIGORELLI (B2)
VIII MARZO (A2)
VINCENZO DA SEREGNO (from Corso Matteotti to Via Peregò) (C2)
VIRGILIO (A2)
VISCONTI (A2)
VITTORIO VENETO / VOLTA XXIV MAGGIO

(C2)
VIVALDI (A2)
VIVIANI (B2)
VON WEBER (A2)
W
WAGNER (from Via Locatelli to the border) (B2)
WAGNER (from Via Locatelli to Via Piave) (B1)
WASHINGTON (B1)
X
XXV APRILE (A2)
Z
ZARA (B2)



Plastic, aluminium and steel packaging (lightweight multi-material)

In the **transparent yellow bag**.



What to put inside: bottles, plastic plates and cups, plastic bags and film (including cellophane), bottles and tubes, trays, tins and containers for food (also in polystyrene and plastic), plastic wrap for packing, including bubble wrap, caps, empty beverage and liquid cans, and Tetra Paks.



Remember: Empty the containers and reduce their size where possible.



Organic Waste

In **the designated bin**, in **biodegradable and compostable bags**.



What to put inside: raw and cooked kitchen scraps and leftovers, skins and scraps from fruit and vegetables, meat and fish scraps and bones, pasta and starchy foods, bread, rice, pits, shells (of eggs, walnuts, hazelnuts), tea and chamomile tea filters, coffee grounds (no pods), corks, used napkins and paper tissues, biodegradable and compostable disposable plates and cups.



Remember: Do not use plastic bags



Glass

In **the designated blue bin**



What to put inside: glass bottles, glass containers, glass jars, glass flacons, food jars. Empty the containers before throwing them away.



Remember: the disposal of ceramics and porcelain together with glass compromises the entire material recovery process.



Paper and cardboard

In the **designated bin**, in **paper boxes** and **bags**, or **tied with twine**



What to put inside: newspapers, notebooks and magazines (without adhesive, metal and plastic parts), paper bags, cardboard trays and boxes for food, cardboard packaging for toys and clothing, pizza boxes without food residue, beverage cartons (no Tetra Packs).



Remember: crush and fold the boxes to reduce the bulk.



Unsorted dry waste

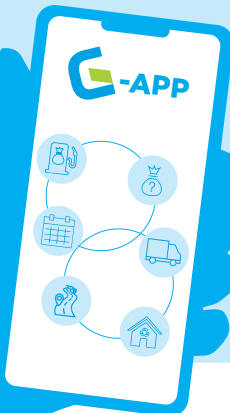
In the **blue^{RFID} bag**



What to put inside: dirty oiled and sandpaper, register receipts, broken dishes, glasses, ceramic cups, candles, pens, plastic cutlery, sponges, filters and bags for vacuum cleaners, cigarette butts, sanitary pads, plasters, disposable razors.



Remember: for the collection of unsorted dry waste, it is mandatory to use Gelsia Ambiente's blue^{RFID} bags; no other bags will be collected.



Gelsia Ambiente is just a click away

Discover our digital channels.
All Gelsia Ambiente services
when and where you want.



Other home collection services



Sanitary textiles (Nappies, incontinence pads and bed pads). In the orange bag.

The service is free of charge and reserved for families with children under the age of 3 and for persons using absorbent incontinence aids. To activate the service, please visit www.gelsiambiente.it or go to a Gelsia Ambiente office.

Scan the QR Code
for more information



Green clippings In the 240-litre wheeled container with a comb-type attachment.

The service is by subscription and reserved for domestic users. The fortnightly emptying schedule is published on the website www.gelsiambiente.it and on the G-App.

Scan the QR Code
for more information



Bulky waste and large WEEE

The home collection service, subject to booking, is free of charge for people over 70, people with disabilities, the categories identified by ARERA, and users referred by social services. To book, visit the website www.gelsiambiente.it or call the toll-free number 800.445964.

Scan the QR Code
for more information





Vending machines for blue, organic, yellow and orange bags

What you need to collect the bags:

For domestic users: the Health Card (Carta Regionale dei Servizi) or the Electronic Identity Card of the TARI waste collection tax payer.

For non-domestic users: the G-card.

Users can collect bags at **any time** and from **any dispenser**, including those located outside their own municipality.

What are the annual collection limits:

Blue RFID bags – residents: 5 rolls; non-domestic users: 50 rolls

Transparent yellow sacks – residents and non-domestic users: 7 rolls

Biocompostable bags – residents: 2 rolls

Orange bags (subject to activation) – residents, 10 rolls



Scan the QR code to find out where they are and what they provide, and you can check availability in real time on the G-App.



Other collection services in the area



Batteries:

In the dedicated containers and in businesses (find out where they are on the G-App).



Expired drugs

Containers in pharmacies (find out where they are on the G-App).



Used clothes

Containers across the area (find out where they are on the G-App).



Vegetable oils



Collect vegetable oil in a plastic bottle and take it to your nearest **PuntOlio**.

Scan the QR Code to find out where the PuntOlio are located





The Ecological Platform at Via Reggio, 63

October 1 to April 30

Mon	Tue	Wed	Thu	Fri	Sat
7.30 - 12.00	7.30 - 12.00	7.30 - 12.00 13.30 - 16.30	7.30 - 12.00	7.30 - 12.00 13.30 - 16.30	7.30 - 12.00 13.30 - 16.30
All users					domestic users only

From May 1 to September 30

Mon	Tue	Wed	Thu	Fri	Sat
7.30 - 12.00	7.30 - 12.00	7.30 - 12.00 14.00 - 17.00	7.30 - 12.00	7.30 - 12.00 14.00 - 17.00	7.30 - 12.00 14.00 - 17.00
All users					domestic users only

Closed on weekends and public holidays.

The service is completely free of charge, and access is granted upon presentation of identification document.

Production and commercial businesses may only deposit the permitted types of waste, must have the relevant form, and must be registered with the National Register of Environmental Managers.

To the Ecological Platform, you can bring



Paper and cardboard



Wood



Hazardous*



Used



Metals



WEEE
Waste Electrical and Electronic Equipment



Inert waste*



Used vegetable and mineral oils*



Vegetation*



Bulky waste



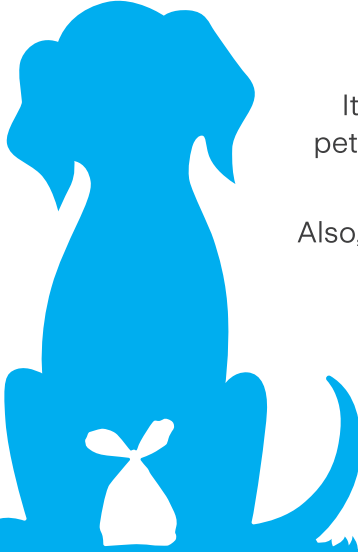
Batteries*



Glass

Domestic users only*

Do not leave dog droppings



It is your responsibility to collect your pet's droppings and dispose of them in roadside bins.

Also, remember to wash away any traces left by your four-legged friends.

There are **penalties for incorrect behaviour!**

Do not litter.

Leaving waste behind in the local area is an act of incivility and is dangerous for both the environment and people.

There are **surveillance cameras in** the area that enable the identification and fine of anyone who fails to comply with the rules.



For more information:

gelsiambiente.it

